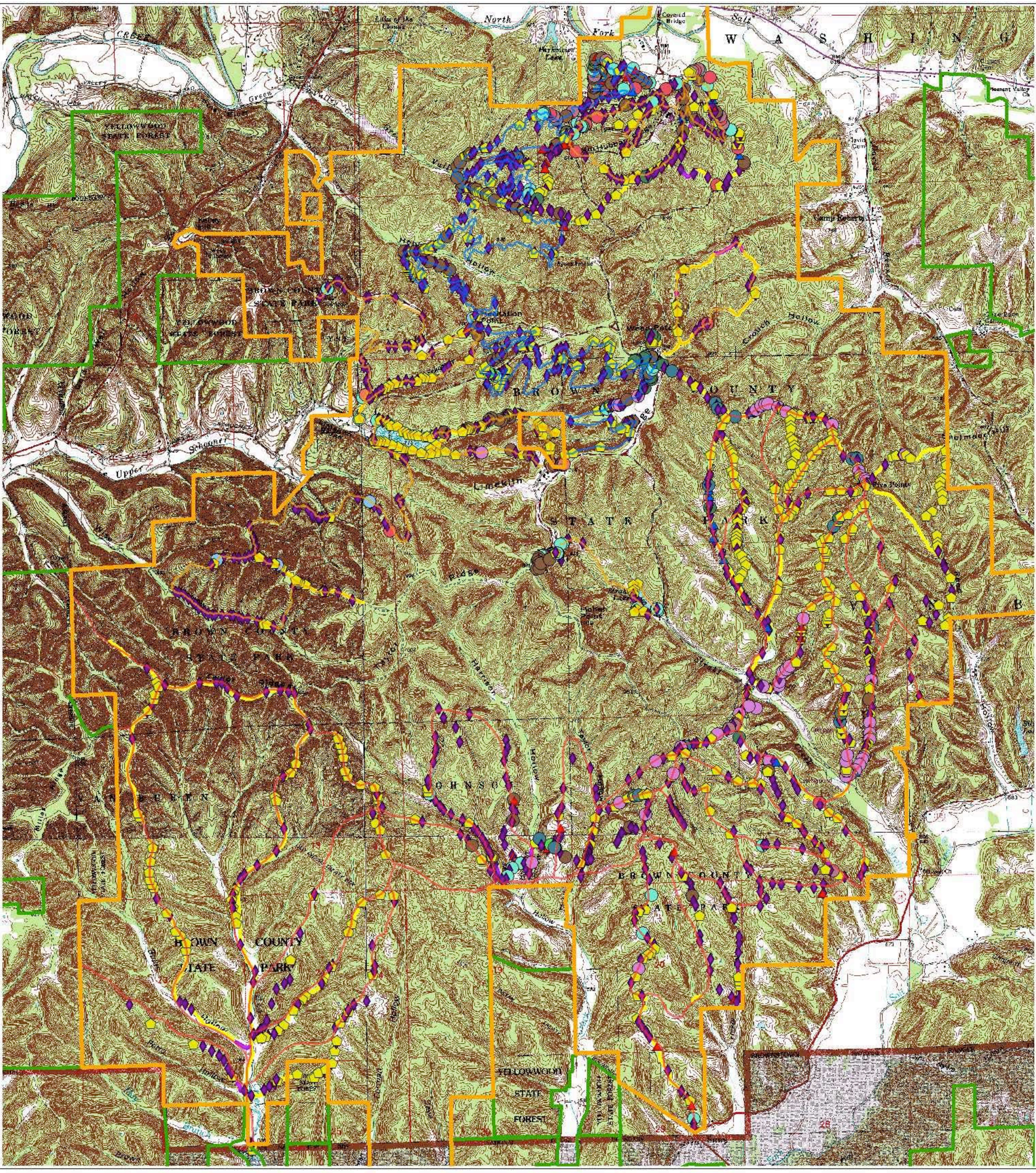


Brown County State Park Invasive Plant Survey



- Legend**
- State Park Boundary
 - Managed Lands
 - Horse Trail
 - Hiking Trail
 - Mtn Bike Trail
 - Invasive Polygons (Infestations >1/10 acre)**
 - Japanese stiltgrass
 - Multiflora rose
 - Multiflora rose, Japanese stiltgrass
 - Oriental bittersweet

- Invasive Points (Infestations <30' long)**
- | | |
|---|---|
| ● Japanese knotweed | ● Japanese barberry |
| ● Tree of heaven | ● Garlic mustard |
| ● Winged burning bush | ● Dames rocket |
| ● Privet | ● Bush honeysuckle |
| ▲ Periwinkle | ▲ Autumn olive |
| ● Oriental bittersweet | ◆ Japanese stiltgrass |
| ● Japanese honeysuckle | ◆ Multiflora rose |

- Invasive Polylines (Infestations >30', <1/10 acre)**
- Japanese barberry
 - Japanese honeysuckle
 - Japanese stiltgrass
 - Multiflora rose

Scale: 1:18,000
 Miles 0 0.25 0.5 1 1.5 2

Map Created By: Brooks Davey, Chris Neggers
 Data Collected: 7/1/11-9/17/11
 Map Created: 9/30/11

Project Funded By:



The Nature Conservancy
Protecting nature. Preserving life.



Brown County Native Woodlands Project, Inc.



CWMA
Brown Co. Soil and Water Conservation District



DNR
Indiana Department of Natural Resources



Southern IN Cooperative Weed Management Area

Data collected along all trails within Brown Co. State Park using HP iPAQ equipped with ArcPad 10.
 Mapping Criteria: Invasive Points taken for infestations less than 30ft long. Invasive Polylines taken for infestations greater than 30ft long while less than 1/10 acre. Invasive Polygons taken for infestations greater than 1/10 acre.